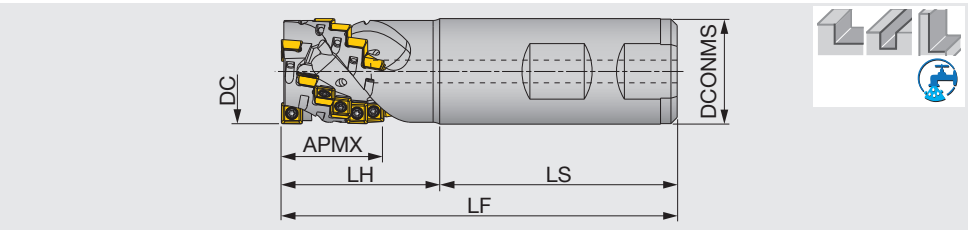
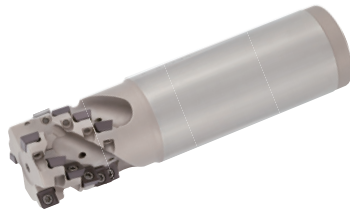


- High Feed Milling
- Face Milling
- Shoulder Milling
- Slot Milling
- Profile Milling

TUNGQUAD

ELD05

High density square shoulder endmill for roughing, shank type, with screw clamp system, for SDMT/SDHT05 inserts



Designation	APMX	DC	ZEFP	CICT	DCONMS	LS	LH	LF	WT(kg)	Air hole	Insert
ELD05R020M20.0W02	20.3	20	2	10	20	53	32	85	0.2	With	SD*T0502...
ELD05R025M25.0W03	24.2	25	3	18	25	59	36	95	0.3	With	SD*T0502...

SPARE PARTS

Designation	Clamping screw	Wrench
ELD05...	CSPB-2L043	IP-6DB

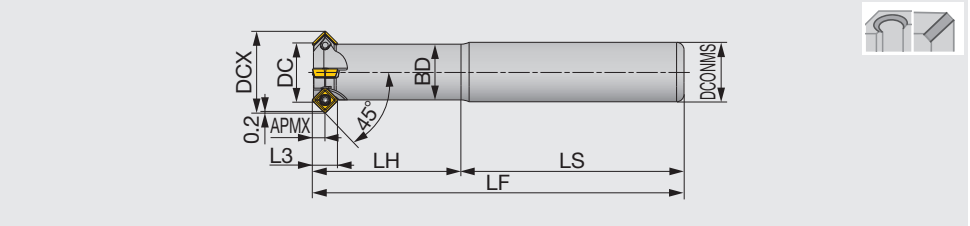
*Recommended clamping torque (N-m) : CSPB-2L043=0.7

- Approach angle
- 10°-20°
- 45°
- 70°
- 85°
- 88°
- 90°
- Others

TUNGQUAD

EASD05

Chamfering endmill, for SDMT/SDHT05 inserts



Designation	DCX	CICT	DC*	BD	APMX	DCONMS	LH	L3	LS	LF	Air hole	Insert
EASD05M006C12.0R01	12	1	5.7	7.5	3	12	40	6.8	60	100	Without	SD*T0502...
EASD05M008C12.0R02	14	2	7.8	9.1	3	12	40	6.8	60	100	Without	SD*T0502...
EASD05M016C16.0R04	22	4	15.7	15	3	16	40	6.8	60	100	Without	SD*T0502...

The minimum chamfering diameter (DC) measures up to the point where the insert's nose radius ends. This will offset the total tool length by shortening 0.3 mm.

SPARE PARTS

Designation	Clamping screw	Wrench
EASD05...	CSPB-2L043	IP-6DB

*Recommended clamping torque (N-m) : CSPB-2L043=0.7

Reference pages: Inserts → **H159**, Standard cutting conditions → **H160 - H161**